

## CRANEABLE Z STAIRS / STRETCHER STAIRS



# BENEFITS OF PROSCAF STAIRS



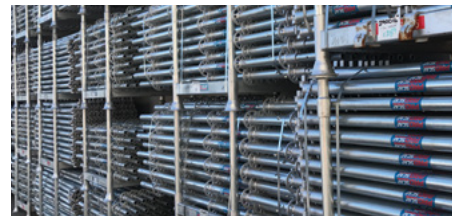
Designed and engineered by SafeSmart Access, in Australia and New Zealand, Proscaf was developed with a clear vision in mind: To produce the safest, most efficient and highest quality scaffold system available.

Proscaf Z and Stretcher Stair Access towers have been developed as a fundamental part of the range. See key characteristics below, including;

**One System. One Solution.** Due to the unique range of parts available, craneable stairs can be built, using only proprietary tower components. This makes design, engineering checks, and building scaffolds a simplified and streamlined affair.



**Galvanised, high grade steel and high tensile aluminium components.** Each Proscaf component is made from high grade steel, or high tensile aluminium. Working with a refined material specification, material batches are checked by Proscaf engineers before moving through to production.



**Pre-engineered for tower heights up to 40m in standard configurations.** Using standard components and with no change to standard tower configurations, Proscaf Z and Stretcher Stair towers can be craned in sections up to 40mH. With further engineering in design, even higher towers are able to be craned in single sections. The sky's the limit!



**2m risers - for optimum efficiency and designed to match your floor levels.** 2m stair risers reduce the risk of overhead clearance issues when egressing onto building levels, and also lead to labour and material efficiencies when assembling stair access tower.

**Design documentation and craning methodology for integration with on-site lift plans.** Our full technical data package includes component data, design methodologies for stair towers, and safe installation and crane lift plans, is available to all Proscaf customers.



Today, Proscaf is manufactured in our ISO9001 certified factory and distributed throughout the world.



Complies with  
**AS/NZS**  
1576 :2010



## PROSCAF CRANEABLE COMPONENTS

Craneable Stairs represent an opportunity for the contractor to make gains in safety and efficiency on site.

Advantages include:

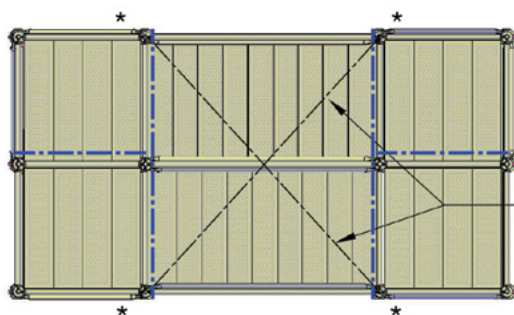
- Save time: When stair relocations are required, this can be done in a fraction of the time it would take to dismantle and re-build traditional stair towers.
- Safer: Less risk of injury that may be incurred when constantly dismantling and assembling towers.

The components and features listed below are the key characteristics of what makes Proscaf the first and safest choice for Craneable Stair Towers.

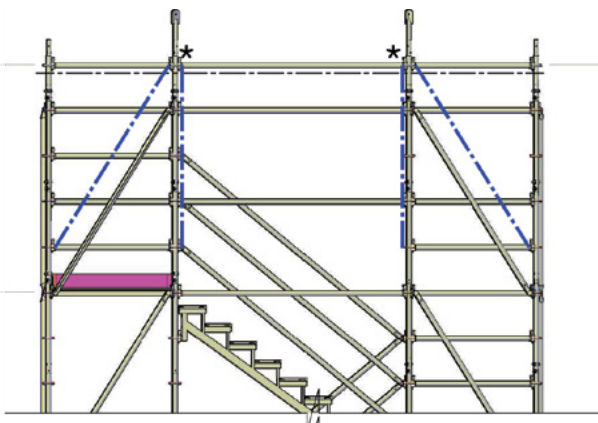
## LOAD BEARING BRACING

— · — · — · — DENOTES TEMPORARY DIAGONAL BRACING AND NODE POINT LEDGES TO BE INSTALLED AT TOP LIFT HEIGHT PRIOR TO LIFTING STAIR

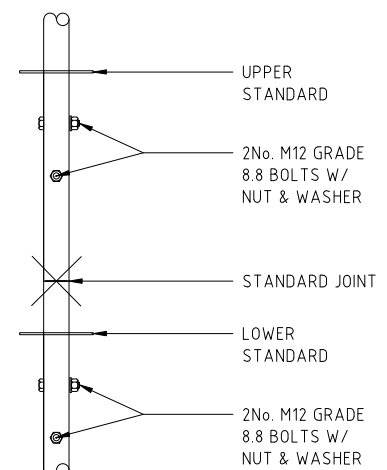
\*LIFTING POINTS



PLAN BRACING SH  
AT LIFTING LEVEL  
(DASHED DOT)



## BOLTED CONNECTIONS AT INTERCONNECTING ENDS OF STANDARDS



## ADJUSTABLE PLAN BRACE



## LIFTING LUG



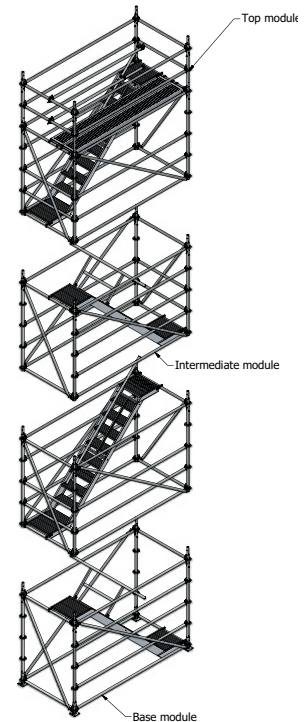
## BASE JACK RETAINER



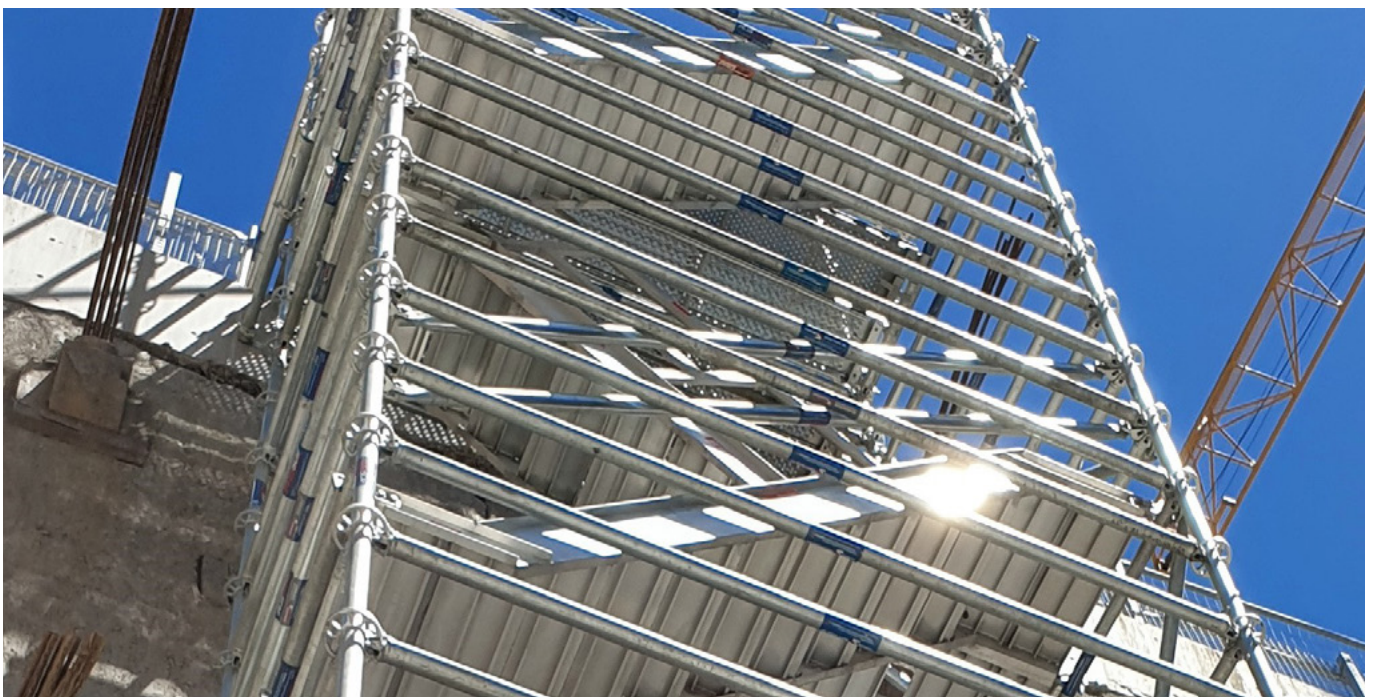


## FEATURES & BENEFITS

- With a stair tread width of 600mm, Proscaf Craneable Z Stairs are ideal for construction site foot traffic.
- The footprint of these stair towers is 1.4m x 1.57m. This makes them ideal for use on even the most space restricted sites.
- Proscaf Craneable Z Stairs can be used in conjunction with other products such as AdjustaStairs to allow for varying heights of egress.



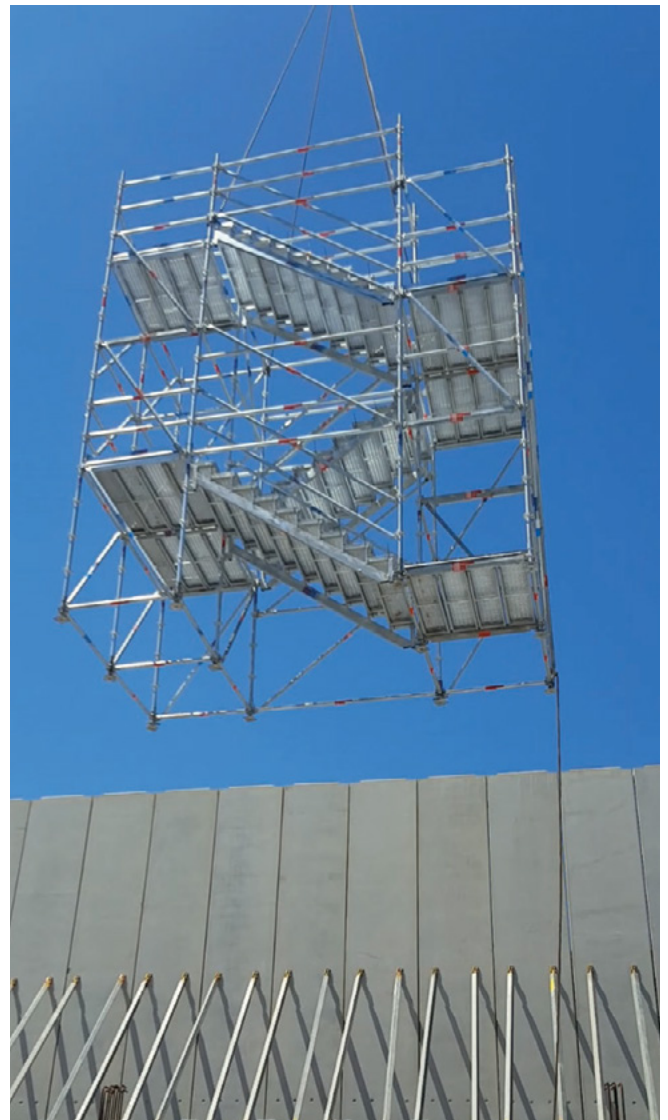
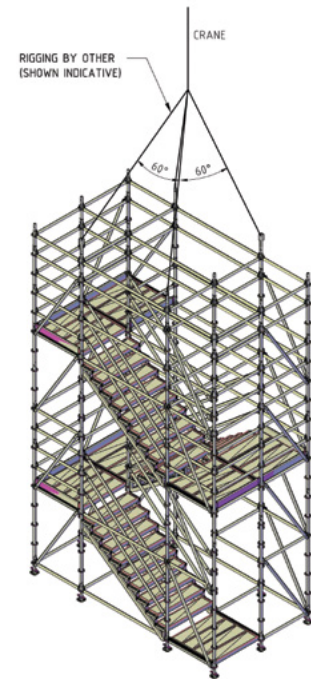




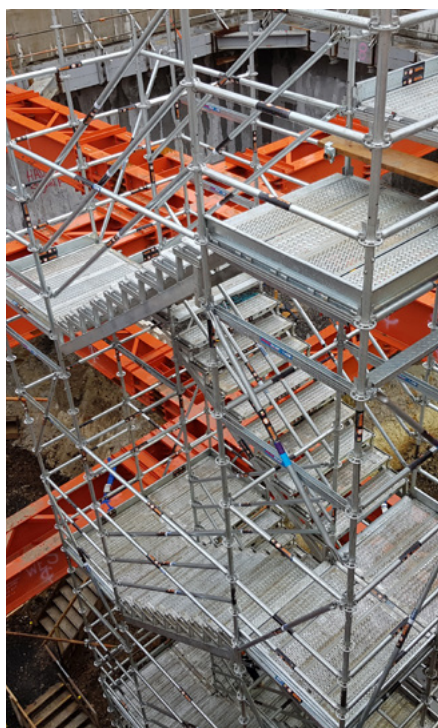


## FEATURES & BENEFITS

- Proscaf Craneable Stretcher Stairs are ideal for scenarios with high levels of foot traffic, or where stretcher access is required; for example, at the early excavation stages of a project.
- Available with construction compliant or public access compliant treads and fixtures.
- Also able to be configured as hanging stairs.











## TERMS & CONDITIONS

1. Copyright SafeSmart Access 2020. ABN 20 024 050 645 - No part of this publication may be reproduced without the written permission of SafeSmart Access.
2. SafeSmart Access has made every effort to portray accurate descriptions and information within this catalogue. No liability is accepted in the event of errors or omissions.
3. Where specifications are provided they are intended as a guide only. Please enquire from our staff for full details of product at time of enquiry.
4. Products may be deleted, amended, substituted or changed at the sole discretion of SafeSmart Access.
5. The customer/user must establish the suitability of the product purchased for their own safe use.
6. Trade Marks. Where any registered trade mark has been used it is with recognition of the owner's right.
7. Any measurements shown are intended as a guide only. Please confirm any critical measurement with SafeSmart Access.
8. Compliance to standards may be in part or whole subject to the nature of the product.



**PROSCAF**

SYD 02 8844 4500 - MEL 03 8335 0082 - BNE 07 3434 3573

[www.proscaf.com](http://www.proscaf.com)